

# FOR THE FULL BAND

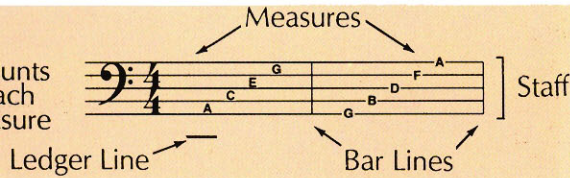
**BASS  
CLEF**

**TIME  
SIGNATURE**

**WHOLE  
NOTE**

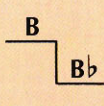
**WHOLE  
REST**


$\frac{4}{4}$  = 4 counts  
in each  
measure



A whole note gets  
4 counts in  $\frac{4}{4}$  time.

A whole rest gets  
4 counts in  $\frac{4}{4}$  time.


**FLAT**


A flat (b) lowers the pitch of a note one half step.  
It remains in effect for the entire measure.

## 1 TIME FOR BAND

The numbers indicate which valves should be pressed down.

▶ A double bar line marks the end of the music.

## 2 THE FUN CONTINUES

## 3 WHOLE LOTTA COUNTING

▶ Write in the counting and clap the rhythm before you play.

## 4 FOUR SCORE

Page 39

▶ When you see a page number followed by an arrow, *Excellerate* to the page indicated for additional studies.

## 5 MIX 'EM UP

## 6 MELTING POT

## 7 BAND ON PARADE



▶ Lines with a medal are *Achievement Lines*. The chart on page 47 can be used to record your progress.