

FOR THE FULL BAND

**BASS
CLEF**

**TIME
SIGNATURE**

**WHOLE
NOTE**

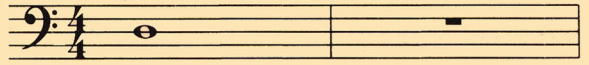
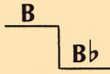
**WHOLE
REST**


Ledger Line → Bar Lines → Staff

$\frac{4}{4}$ = 4 counts in each measure

Measures

 A whole note gets 4 counts in $\frac{4}{4}$ time.

 A whole rest gets 4 counts in $\frac{4}{4}$ time.

FLAT


A flat (b) lowers the pitch of a note one half step. It remains in effect for the entire measure.

1 TIME FOR BAND

D

4

The number indicates what position to use. ▶ A double bar line marks the end of the music.

2 THE FUN CONTINUES

C

6

3 WHOLE LOTTA COUNTING

▶ Write in the counting and clap the rhythm before you play.

4 FOUR SCORE

Page 39

B flat (Bb)

1

▶ When you see a page number followed by an arrow, *Excellerate* to the page indicated for additional studies.

5 MIX 'EM UP

6 MELTING POT

7 BAND ON PARADE



 ▶ Lines with a medal are *Achievement Lines*. The chart on page 47 can be used to record your progress.