

# FOR THE FULL BAND

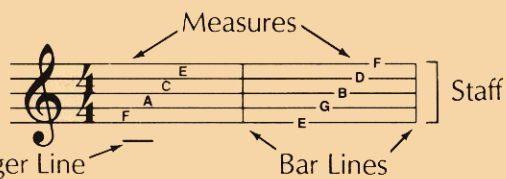
TREBLE  
CLEF



TIME  
SIGNATURE



$\frac{4}{4}$  = 4 counts  
in each  
measure



WHOLE  
NOTE

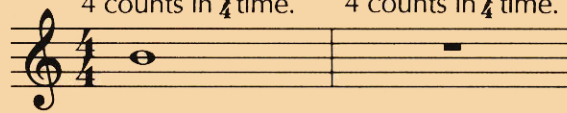


WHOLE  
REST

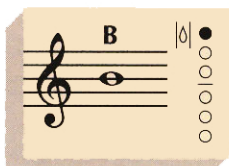


A whole note gets  
4 counts in  $\frac{4}{4}$  time.

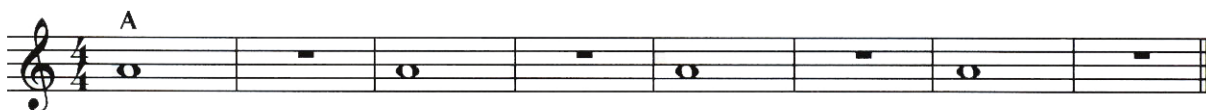
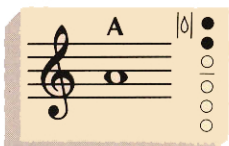
A whole rest gets  
4 counts in  $\frac{4}{4}$  time.



## 1 TIME FOR BAND



## 2 THE FUN CONTINUES



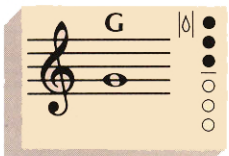
## 3 WHOLE LOTTA COUNTING



▶ Write in the counting and clap the rhythm before you play.

## 4 FOUR SCORE

Page 39



▶ When you see a page number followed by an arrow, *Excellerate* to the page indicated for additional studies.

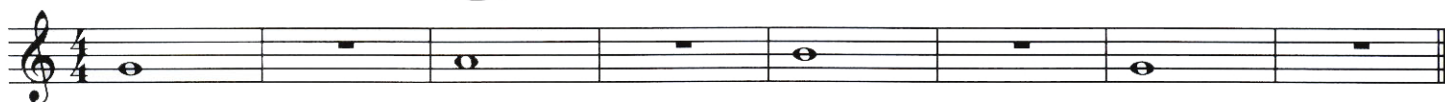
## 5 MIX 'EM UP



## 6 MELTING POT



## 7 BAND ON PARADE



▶ Lines with a medal are *Achievement Lines*. The chart on page 47 can be used to record your progress.