

# FOR THE FULL BAND

**BASS CLEF**

**TIME SIGNATURE**

**WHOLE NOTE**

**WHOLE REST**


Ledger Line

Bar Lines

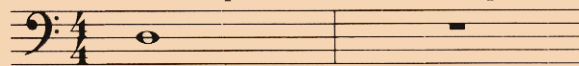
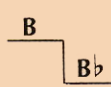
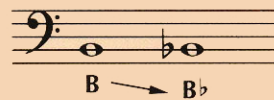
Staff

Measures

$\frac{4}{4}$  = 4 counts in each measure

A whole note gets 4 counts in  $\frac{4}{4}$  time.

A whole rest gets 4 counts in  $\frac{4}{4}$  time.


**FLAT**


A flat (b) lowers the pitch of a note one half step. It remains in effect for the entire measure.

## 1 TIME FOR BAND

D

12

D

The numbers indicate which valves should be pressed down.

▶ A double bar line marks the end of the music.

## 2 THE FUN CONTINUES

C

13

C

## 3 WHOLE LOTTA COUNTING

▶ Write in the counting and clap the rhythm before you play.

## 4 FOUR SCORE

Page 39

B flat (Bb)

0

Bb

▶ When you see a page number followed by an arrow, *Excellerate* to the page indicated for additional studies.

## 5 MIX 'EM UP

## 6 MELTING POT

## 7 BAND ON PARADE



▶ Lines with a medal are *Achievement Lines*. The chart on page 47 can be used to record your progress.